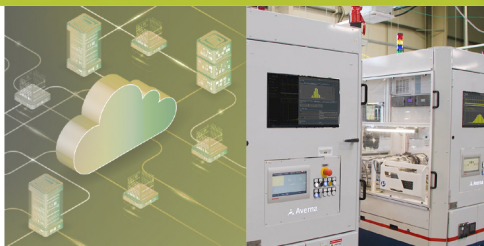


INDUSTRY  
4.0  
READY!

# PROLIGENT™ CLOUD



Transform complex test data into **valuable insight** into your products **without the need for** additional hardware or complex installation.



# PROLIGENT™ CLOUD

## Proligent™ Cloud Benefits

- Get reliable performance data through simplified dashboards on products & assets.
- Save time with a built-in data analysis tool. Keep focus on your product while Proligent Cloud sorts through your data.
- Protect your brand by detecting potential product issues.
- Gain insight into manufacturing trends affecting your production line.
- Clear pricing without confusion or surprises.

## → Designed for the People that need it by the People that use it

Proligent™ Cloud is designed for Operations Managers, Quality Engineers, Manufacturing Engineers and Test Engineers. This easy-to-use software solution monitors test stations and provides **valuable insight into your product line. Ready-to-use** with **Averna Launch** or **NI TestStand**, benefit from organized and detailed measurement information to make **better business decisions**.

## → Information to Count On

Designed for small to medium-sized manufacturing facilities, Proligent™ Cloud is ideal for design, New Product Introduction (NPI), and production. Get relevant statistics with Cpk analysis, measurement trends, unit history, performance, quality, OEE dashboards and more for a better overall understanding.

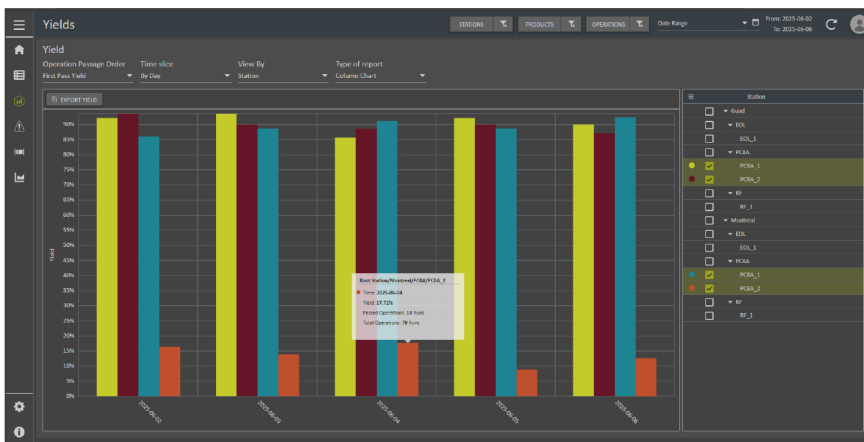
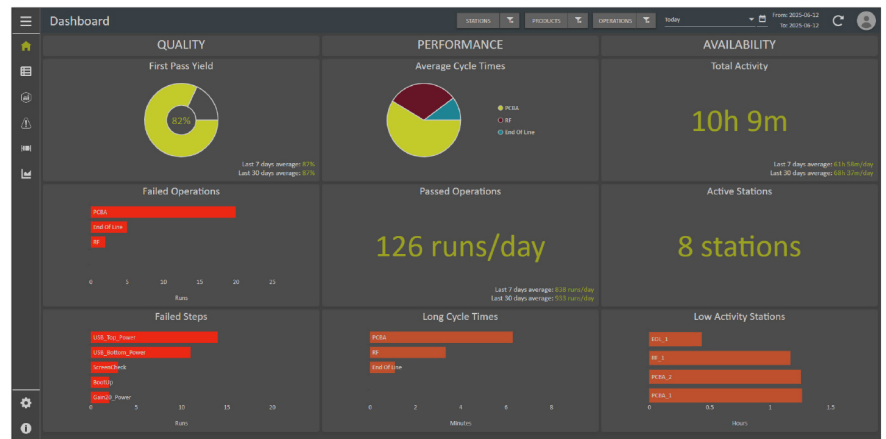
## → Proligent™ Solutions Comparison

	QuickView	Cloud	Analytics
Number of Supported Stations	1	5-100	Unlimited
User-Segregation	No	No	Yes
Infrastructure Management Required	No	No	Yes
Database Storage Size	10 GB	10 GB, up to 10 TB	Unlimited
Total Document Storage	none	10 GB, up to 10 TB	Unlimited
Data Retention	90 days	Unlimited	Unlimited
Aggregation (Multi-Station)	No	Yes	Yes
Aggregation (Multi-Site)	No	Yes	Yes
Pricing Model	Station/Asset	Subscription: Pay as you go	Server/Station/User
Budgetary Price	\$	\$\$	\$\$\$

# TARGETED REPORTS TO DELIVER THE DATA YOU NEED

## OEE Dashboard

Monitor equipment efficiency, availability, and performance losses to uncover opportunities to maximize productivity

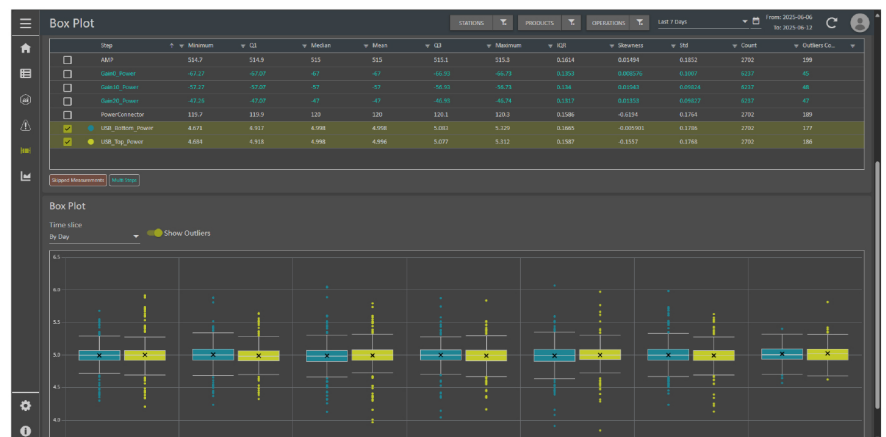


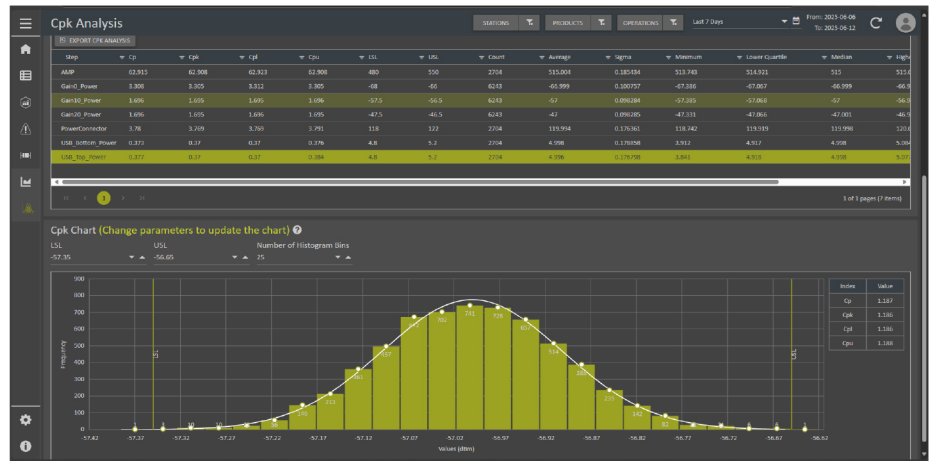
## First Pass Yield and Failed Step

Track how often you get it right the first time and identify key failure points to drive focused improvements

## Box Plot

Reveal real-world variations, process shifts, and outliers with simplified visual data





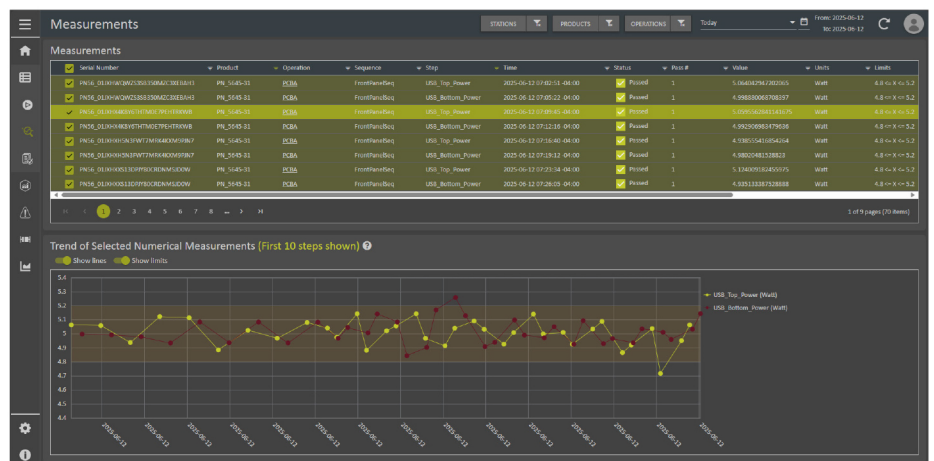
Operation Runs

Operation Runs

Go to specific menu/document

Download menu/document

<input type="checkbox"/>	Serial Number	Product	Status	Operation	Operator	Station	Pass #	Documents	Start Time	End Time
<input type="checkbox"/>	PN65_G33J4M4MNC0279FPCB4C8H023	PK_0645-31	<div>✔ Passed</div>	End Of Line	Operator	EOL_1	1	0	2025-05-12 09:29:24 -0400	2025-05-12 09:30:32 -0400
<input type="checkbox"/>	PN65_G33J4M4MNC0279FPCB4C8H023	PK_0645-31	<div>✔ Passed</div>	End Of Line	Operator	EOL_1	1	0	2025-05-12 09:29:24 -0400	2025-05-12 09:30:32 -0400
<input type="checkbox"/>	PN65_G33J4M4MNC0279FPCB4C8H023	PK_0645-31	<div>✖ Failed</div>	End Of Line	Operator	EOL_1	1	0	2025-05-12 09:29:24 -0400	2025-05-12 09:30:32 -0400
<input type="checkbox"/>	PN65_G33J4M4MNC0279FPCB4C8H023	PK_0645-31	<div>✔ Passed</div>	RF	Operator	RF_1	1	0	2025-05-12 09:29:24 -0400	2025-05-12 09:29:59 -0400
<input type="checkbox"/>	PN65_G33J4M4MNC0279FPCB4C8H023	PK_0645-31	<div>✔ Passed</div>	RF	Operator	RF_1	1	0	2025-05-12 09:29:30 -0400	2025-05-12 09:29:59 -0400
<input type="checkbox"/>	PN65_G33J4M4MNC0279FPCB4C8H023	PK_0645-31	<div>✔ Passed</div>	PCBA	Operator	PCBA_1	1	1	2025-05-12 09:29:35 -0400	2025-05-12 09:29:59 -0400
<input type="checkbox"/>	PN65_G33J4M4MNC0279FPCB4C8H023	PK_0645-31	<div>✔ Passed</div>	EE	Operator	EE_1	1	0	2025-05-12 09:29:36 -0400	2025-05-12 09:29:59 -0400
<input type="checkbox"/>	PN65_G33J4M4MNC0279FPCB4C8H023	PK_0645-31	<div>✔ Passed</div>	PCBA	Operator	PCBA_1	2	1	2025-05-12 09:29:48 -0400	2025-05-12 09:29:59 -0400
<input type="checkbox"/>	PN65_G33J4M4MNC0279FPCB4C8H023	PK_0645-31	<div>✔ Passed</div>	End Of Line	Operator	EOL_1	1	0	2025-05-12 09:29:48 -0400	2025-05-12 09:29:59 -0400
<input type="checkbox"/>	PN65_G33J4M4MNC0279FPCB4C8H023	PK_0645-31	<div>✔ Passed</div>	End Of Line	Operator	EOL_1	1	0	2025-05-12 09:29:48 -0400	2025-05-12 09:29:59 -0400
<input type="checkbox"/>	PN65_G33J4M4MNC0279FPCB4C8H023	PK_0645-31	<div>✔ Passed</div>	RF	Operator	RF_1	1	0	2025-05-12 09:29:53 -0400	2025-05-12 09:29:59 -0400
<input type="checkbox"/>	PN65_G33J4M4MNC0279FPCB4C8H023	PK_0645-31	<div>✔ Passed</div>	RF	Operator	RF_1	1	0	2025-05-12 09:29:53 -0400	2025-05-12 09:29:59 -0400
<input type="checkbox"/>	PN65_G33J4M4MNC0279FPCB4C8H023	PK_0645-31	<div>✖ Failed</div>	PCBA	Operator	PCBA_1	1	1	2025-05-12 09:30:02 -0400	2025-05-12 09:30:29 -0400
<input type="checkbox"/>	PN65_G33J4M4MNC0279FPCB4C8H023	PK_0645-31	<div>✔ Passed</div>	PCBA	Operator	PCBA_1	2	1	2025-05-12 09:30:13 -0400	2025-05-12 09:30:29 -0400
<input type="checkbox"/>	PN65_G33J4M4MNC0279FPCB4C8H023	PK_0645-31	<div>✔ Passed</div>	RF	Operator	RF_1	1	0	2025-05-12 09:30:14 -0400	2025-05-12 09:30:29 -0400
<input type="checkbox"/>	PN65_G33J4M4MNC0279FPCB4C8H023	PK_0645-31	<div>✔ Passed</div>	EE	Operator	EE_1	1	0	2025-05-12 09:30:21 -0400	2025-05-12 09:30:29 -0400
<input type="checkbox"/>	PN65_G33J4M4MNC0279FPCB4C8H023	PK_0645-31	<div>✔ Passed</div>	End Of Line	Operator	EOL_1	1	0	2025-05-12 09:30:23 -0400	2025-05-12 09:30:29 -0400
<input type="checkbox"/>	PN65_G33J4M4MNC0279FPCB4C8H023	PK_0645-31	<div>✔ Passed</div>	End Of Line	Operator	EOL_1	1	0	2025-05-12 09:30:23 -0400	2025-05-12 09:30:29 -0400
<input type="checkbox"/>	PN65_G33J4M4MNC0279FPCB4C8H023	PK_0645-31	<div>✔ Passed</div>	RF	Operator	RF_1	1	0	2025-05-12 09:30:28 -0400	2025-05-12 09:30:29 -0400
<input type="checkbox"/>	PN65_G33J4M4MNC0279FPCB4C8H023	PK_0645-31	<div>✔ Passed</div>	RF	Operator	RF_1	1	0	2025-05-12 09:30:28 -0400	2025-05-12 09:30:29 -0400
<input type="checkbox"/>	PN65_G33J4M4MNC0279FPCB4C8H023	PK_0645-31	<div>✔ Passed</div>	End Of Line	Operator	EOL_1	1	0	2025-05-12 09:30:28 -0400	2025-05-12 09:30:29 -0400
<input type="checkbox"/>	PN65_G33J4M4MNC0279FPCB4C8H023	PK_0645-31	<div>✔ Passed</div>	End Of Line	Operator	EOL_1	1	0	2025-05-12 09:30:28 -0400	2025-05-12 09:30:29 -0400
<input type="checkbox"/>	PN65_G33J4M4MNC0279FPCB4C8H023	PK_0645-31	<div>✔ Passed</div>	RF	Operator	RF_1	1	0	2025-05-12 09:30:28 -0400	2025-05-12 09:30:29 -0400
<input type="checkbox"/>	PN65_G33J4M4MNC0279FPCB4C8H023	PK_0645-31	<div>✔ Passed</div>	RF	Operator	RF_1	1	0	2025-05-12 09:30:28 -0400	2025-05-12 09:30:29 -0400
<input type="checkbox"/>	PN65_G33J4M4MNC0279FPCB4C8H023	PK_0645-31	<div>✔ Passed</div>	End Of Line	Operator	EOL_1	1	0	2025-05-12 09:30:28 -0400	2025-05-12 09:30:29 -0400
<input type="checkbox"/>	PN65_G33J4M4MNC0279FPCB4C8H023	PK_0645-31	<div>✔ Passed</div>	End Of Line	Operator	EOL_1	1	0	2025-05-12 09:30:28 -0400	2025-05-12 09:30:29 -0400
<input type="checkbox"/>	PN65_G33J4M4MNC0279FPCB4C8H023	PK_0645-31	<div>✔ Passed</div>	RF	Operator	RF_1	1	0	2025-05-12 09:30:28 -0400	2025-05-12 09:30:29 -0400
<input type="checkbox"/>	PN65_G33J4M4MNC0279FPCB4C8H023	PK_0645-31	<div>✔ Passed</div>	RF	Operator	RF_1	1	0	2025-05-12 09:30:28 -0400	2025-05-12 09:30:29 -0400
<input type="checkbox"/>	PN65_G33J4M4MNC0279FPCB4C8H023	PK_0645-31	<div>✔ Passed</div>	End Of Line	Operator	EOL_1	1	0	2025-05-12 09:30:28 -0400	2025-05-12 09:30:29 -0400
<input type="checkbox"/>	PN65_G33J4M4MNC0279FPCB4C8H023	PK_0645-31	<div>✔ Passed</div>	End Of Line	Operator	EOL_1	1	0	2025-05-12 09:30:28 -0400	2025-05-12 09:30:29 -0400
<input type="checkbox"/>	PN65_G33J4M4MNC0279FPCB4C8H023	PK_0645-31	<div>✔ Passed</div>	RF	Operator	RF_1	1	0	2025-05-12 09:30:28 -0400	2025-05-12 09:30:29 -0400
<input type="checkbox"/>	PN65_G33J4M4MNC0279FPCB4C8H023	PK_0645-31	<div>✔ Passed</div>	RF	Operator	RF_1	1	0	2025-05-12 09:30:28 -0400	2025-05-12 09:30:29 -0400
<input type="checkbox"/>	PN65_G33J4M4MNC0279FPCB4C8H023	PK_0645-31	<div>✔ Passed</div>	End Of Line	Operator	EOL_1	1	0	2025-05-12 09:30:28 -0400	2025-05-12 09:30:29 -0400
<input type="checkbox"/>	PN65_G33J4M4MNC0279FPCB4C8H023	PK_0645-31	<div>✔ Passed</div>	End Of Line	Operator	EOL_1	1	0	2025-05-12 09:30:28 -0400	2025-05-12 09:30:29 -0400
<input type="checkbox"/>	PN65_G33J4M4MNC0279FPCB4C8H023	PK_0645-31	<div>✔ Passed</div>	RF	Operator	RF_1	1	0	2025-05-12 09:30:28 -0400	2025-05-12 09:30:29 -0400
<input type="checkbox"/>	PN65_G33J4M4MNC0279FPCB4C8H023	PK_0645-31	<div>✔ Passed</div>	RF	Operator	RF_1	1	0	2025-05-12 09:30:28 -0400	2025-05-12 09:30:29 -0400
<input type="checkbox"/>	PN65_G33J4M4MNC0279FPCB4C8H023	PK_0645-31	<div>✔ Passed</div>	End Of Line	Operator	EOL_1	1	0	2025-05-12 09:30:28 -0400	2025-05-12 09:30:29 -0400
<input type="checkbox"/>	PN65_G33J4M4MNC0279FPCB4C8H023	PK_0645-31	<div>✔ Passed</div>	End Of Line	Operator	EOL_1	1	0	2025-05-12 09:30:28 -0400	2025-05-12 09:30:29 -0400
<input type="checkbox"/>	PN65_G33J4M4MNC0279FPCB4C8H023	PK_0645-31	<div>✔ Passed</div>	RF	Operator	RF_1	1	0	2025-05-12 09:30:28 -0400	2025-05-12 09:30:29 -0400
<input type="checkbox"/>	PN65_G33J4M4MNC0279FPCB4C8H023	PK_0645-31	<div>✔ Passed</div>	RF	Operator	RF_1	1	0	2025-05-12 09:30:28 -0400	2025-05-12 09:30:29 -0400
<input type="checkbox"/>	PN65_G33J4M4MNC0279FPCB4C8H023	PK_0645-31	<div>✔ Passed</div>	End Of Line	Operator	EOL_1	1	0	2025-05-12 09:30:28 -0400	2025-05-12 09:30:29 -0400
<input type="checkbox"/>	PN65_G33J4M4MNC0279FPCB4C8H023	PK_0645-31	<div>✔ Passed</div>	End Of Line	Operator	EOL_1	1	0	2025-05-12 09:30:28 -0400	2025-05-12 09:30:29 -0400
<input type="checkbox"/>	PN65_G33J4M4MNC0279FPCB4C8H023	PK_0645-31	<div>✔ Passed</div>	RF	Operator	RF_1	1	0	2025-05-12 09:30:28 -0400	2025-05-12 09:30:29 -0400
<input type="checkbox"/>	PN65_G33J4M4MNC0279FPCB4C8H023	PK_0645-31	<div>✔ Passed</div>	RF	Operator	RF_1	1	0	2025-05-12 09:30:28 -0400	2025-05-12 09:30:29 -0400
<input type="checkbox"/>	PN65_G33J4M4MNC0279FPCB4C8H023	PK_0645-31	<div>✔ Passed</div>	End Of Line	Operator	EOL_1	1	0	2025-05-12 09:30:28 -0400	2025-05-12 09:30:29 -0400
<input type="checkbox"/>	PN65_G33J4M4MNC0279FPCB4C8H023	PK_0645-31	<div>✔ Passed</div>	End Of Line	Operator	EOL_1	1	0	2025-05-12 09:30:28 -0400	2025-05-12 09:30:29 -0400
<input type="checkbox"/>	PN65_G33J4M4MNC0279FPCB4C8H023	PK_0645-31	<div>✔ Passed</div>	RF	Operator	RF_1	1	0	2025-05-12 09:30:28 -0400	2025-05-12 09:30:29 -0400
<input type="checkbox"/>	PN65_G33J4M4MNC0279FPCB4C8H023	PK_0645-31	<div>✔ Passed</div>	RF	Operator	RF_1	1	0	2025-05-12 09:30:28 -0400	2025-05-12 09:30:29 -0400
<input type="checkbox"/>	PN65_G33J4M4MNC0279FPCB4C8H023	PK_0645-31	<div>✔ Passed</div>	End Of Line	Operator	EOL_1	1	0	2025-05-12 09:30:28 -0400	2025-05-12 09:30:29 -0400
<input type="checkbox"/>	PN65_G33J4M4MNC0279FPCB4C8H023	PK_0645-31	<div>✔ Passed</div>	End Of Line	Operator	EOL_1	1	0	2025-05-12 09:30:28 -0400	2025-05-12 09:30:29 -0400
<input type="checkbox"/>	PN65_G33J4M4MNC0279FPCB4C8H023	PK_0645-31	<div>✔ Passed</div>	RF	Operator	RF_1	1	0	2025-05-12 09:30:28 -0400	2025-05-12 09:30:29 -0400
<input type="checkbox"/>	PN65_G33J4M4MNC0279FPCB4C8H023	PK_0645-31	<div>✔ Passed</div>	RF	Operator	RF_1	1	0	2025-05-12 09:30:28 -0400	2025-05-12 09:30:29 -0400
<input type="checkbox"/>	PN65_G33J4M4MNC0279FPCB4C8H023	PK_0645-31	<div>✔ Passed</div>	End Of Line	Operator	EOL_1	1	0	2025-05-12 09:30:28 -0400	2025-05-12 09:30:29 -0400
<input type="checkbox"/>	PN65_G33J4M4MNC0279FPCB4C8H023	PK_0645-31	<div>✔ Passed</div>	End Of Line	Operator	EOL_1	1	0	2025-05-12 09:30:28 -0400	2025-05-12 09:30:29 -0400
<input type="checkbox"/>	PN65_G33J4M4MNC0279FPCB4C8H023	PK_0645-31	<div>✔ Passed</div>	RF	Operator	RF_1	1	0	2025-05-12 09:30:28 -0400	2025-05-12 09:30:29 -0400
<input type="checkbox"/>	PN65_G33J4M4MNC0279FPCB4C8H023	PK_0645-31	<div>✔ Passed</div>	RF	Operator	RF_1	1	0	2025-05-12 09:30:28 -0400	2025-05-12 09:30:29 -0400
<input type="checkbox"/>	PN65_G33J4M4MNC0279FPCB4C8H023	PK_0645-31	<div>✔ Passed</div>	End Of Line	Operator	EOL_1	1	0	2025-05-12 09:30:28 -0400	2025-05-12 09:30:29 -0400
<input type="checkbox"/>	PN65_G33J4M4MNC0279FPCB4C8H023	PK_0645-31	<div>✔ Passed</div>	End Of Line	Operator	EOL_1	1	0	2025-05-12 09:30:28 -0400	2025-05-12 09:30:29 -0400
<input type="checkbox"/>	PN65_G33J4M4MNC0279FPCB4C8H023	PK_0645-31	<div>✔ Passed</div>	RF	Operator	RF_1	1	0	2025-05-12 09:30:28 -0400	2025-05-12 09:30:29 -0400
<input type="checkbox"/>	PN65_G33J4M4MNC0279FPCB4C8H023	PK_0645-31	<div>✔ Passed</div>	RF	Operator	RF_1	1	0	2025-05-12 09:30:28 -0400	2025-05-12 09:30:29 -0400
<input type="checkbox"/>	PN65_G33J4M4MNC0279FPCB4C8H023	PK_0645-31	<div>✔ Passed</div>	End Of Line	Operator	EOL_1	1	0	2025-05-12 09:30:28 -0400	2025-05-12 09:30:29 -0400
<input type="checkbox"/>	PN65_G33J4M4MNC0279FPCB4C8H023	PK_0645-31	<div>✔ Passed</div>	End Of Line	Operator	EOL_1	1	0	2025-05-12 09:30:28 -0400	2025-05-12 09:30:29 -0400
<input type="checkbox"/>	PN65_G33J4M4MNC0279FPCB4C8H023	PK_0645-31	<div>✔ Passed</div>	RF	Operator	RF_1	1	0	2025-05-12 09:30:28 -0400	2025-05-12 09:30:29 -0400
<input type="checkbox"/>	PN65_G33J4M4MNC0279FPCB4C8H023	PK_0645-31	<div>✔ Passed</div>	RF	Operator	RF_1	1	0	2025-05-12 09:30:28 -0400	2025-05-12 09:30:29 -0400
<input type="checkbox"/>	PN65_G33J4M4MNC0279FPCB4C8H023	PK_0645-31	<div>✔ Passed</div>	End Of Line	Operator	EOL_1	1	0	2025-05-12 09:30:28 -0400	2025-05-12 09:30:29 -0400
<input type="checkbox"/>	PN65_G33J4M4MNC0279FPCB4C8H023	PK_0645-31	<div>✔ Passed</div>	End Of Line	Operator	EOL_1	1	0	2025-05-12 09:30:28 -0400	2025-05-12 09:30:29 -0400
<input type="checkbox"/>	PN65_G33J4M4MNC0279FPCB4C8H023	PK_0645-31	<div>✔ Passed</div>	RF	Operator	RF_1	1	0	2025-05-12 09:30:28 -0400	2025-05-12 09:30:29 -0400
<input type="checkbox"/>	PN65_G33J4M4MNC0279FPCB4C8H023	PK_0645-31	<div>✔ Passed</div>	RF	Operator	RF_1	1	0	2025-05-12 09:30:28 -0400	2025-05-12 09:30:29 -0400
<input type="checkbox"/>	PN65_G33J4M4MNC0279FPCB4C8H023	PK_0645-31	<div>✔ Passed</div>	End Of Line	Operator	EOL_1	1	0	2025-05-12 09:30:28 -0400	2025-05-12 09:30:29 -0400
<input type="checkbox"/>	PN65_G33J4M4MNC0279FPCB4C8H023	PK_0645-31	<div>✔ Passed</div>	End Of Line	Operator	EOL_1	1	0	2025-05-12 09:30:28 -0400	2025-05-12 09:30:29 -0400
<input type="checkbox"/>	PN65_G33J4M4MNC0279FPCB4C8H023	PK_0645-31	<div>✔ Passed</div>	RF	Operator	RF_1	1	0	2025-05-12 09:30:28 -0400	2025-05-12 09:30:29 -0400
<input type="checkbox"/>	PN65_G33J4M4MNC0279FPCB4C8H023	PK_0645-31	<div>✔ Passed</div>	RF	Operator	RF_1	1	0	2025-05-12 09:30:28 -0400	2025-05-12 09:30:29 -0400
<input type="checkbox"/>	PN65_G33J4M4MNC0279FPCB4C8H023	PK_0645-31	<div>✔ Passed</div>	End Of Line	Operator	EOL_1	1	0	2025-05-12 09:30:28 -0400	2025-05-12 09:30:29 -0400
<input type="checkbox"/>	PN65_G33J4M4MNC0279FPCB4C8H023	PK_0645-31	<div>✔ Passed</div>	End Of Line	Operator	EOL_1	1	0	2025-05-12 09:30:28 -0400	2025-05-12 09:30:29 -0400
<input type="checkbox"/>	PN65_G33J4M4MNC0279FPCB4C8H023	PK_0645-31	<div>✔ Passed</div>	RF	Operator	RF_1	1	0	2025-05-12 09:30:28 -0400	2025-05-12 09:30:29 -0400
<input type="checkbox"/>	PN65_G33J4M4MNC0279FPCB4C8H023	PK_0645-31	<div>✔ Passed</div>	RF	Operator	RF_1	1	0	2025-05-12 09:30:28 -0400	2025-05-12 09:30:29 -0400
<input type="checkbox"/>	PN65_G33J4M4MNC0279FPCB4C8H023	PK_0645-31	<div>✔ Passed</div>	End Of Line	Operator	EOL_1				



Averna is a trademark of Averna Technologies Inc. All other brand names, product names or trademarks belong to their respective holders. © 2025 Averna. All rights reserved. 07/2025